



# **The entire world of high pressure cleaning**

COMPETENCE IN CLEANING



# On all continents in the employment! With high pressure simply clean ...



Versatile application fields



Rotary nozzle for wall and floor cleaning by stubborn dirt.



Water sandblasting.

Application of the foam lance.



Tank internal cleaning plants—  
Powerful and environment friendly



Tank internal cleaning plant for the Croatia Railway.



Biological waste water treatment plant for cleaning stations.



Application of a 400 bar high pressure cleaner  
in a chinese dry-dock.



... simply WEIDNER!

# Competence in cleaning!

WEIDNER has the complete programme for high pressure cleaning and cleanliness. The individual product families are illustrated and described in the following pages.

To give a better overview, the product ranges have been arranged in 3 groups:

- Recommended for semi professional use
- Products for business and industrial applications
- Products for daily, industrial cleaning applications



Anti-Twist-System – swivel to prevent hose twisting



Time-Delayed-Stop – time delayed, pressure free stop



Stepless pressure adjustment at the high pressure pistol.

## CONTENT

	<b>Dry-Steam-Cleaner</b>	Page 7–9
	<b>High Pressure Cleaners – unheated</b>	Page 10–14
	<b>High Pressure Cleaners – oil heated</b>	Page 15–17
	<b>High Pressure Cleaners – electrically heated</b>	Page 18–19
	<b>High Pressure Cleaners – stationary heated/unheated</b>	Page 20–21
	<b>High Pressure Stations – stationary unheated</b>	Page 22–25
	<b>Tank Interior Cleaning Systems</b>	Page 26–29
	<b>Outdoor Fleet Cleaning</b>	Page 30–31
	<b>High Pressure Chassis and Wheel Wash Systems</b>	Page 32–33
	<b>Accessories</b>	Page 34–35



## Dry-Steam-Cleaner DAS300 K/L/E

# World novelty at the cleaning field – „Dry-Steam combined with compressed air“

An essential step towards clean environment and energy saving. Dry steam cleaning combined with compressed air is a revolutionary cleaning process. This cleaning method with steam/compressed air and dosed detergent is in many cases an essential favourable alternative to dry ice blasting.

The dry-steam-cleaning is environmental friendly and gentle for the industry machines. Due to our extreme low water consumption no waste water will be left behind, that's why can be cleaned problem free in the factory hall.



**WORLD-NOVELTY**



Optional accessories: water tank with trolley.  
Order no.: DAZFWW110

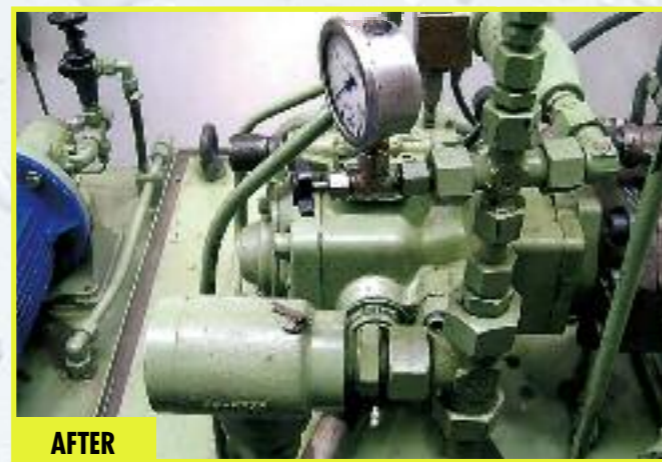


Standard accessories: steam lance with 10 m steam hose.

# Dry-Steam-Cleaner DAS300 K/L/E



**Our "Power packet"  
for the toughest  
application in industry,  
and handcraft**



# Dry-Steam-Cleaner DAS300 K/L/E



Monument cleaning.



**The WEIDNER-method is very fast and low-cost!  
The production equipment can be intensive cleaned with a steam lance without dismantling and work interruption. Consequently less investment for maintenance combined with money saving.**

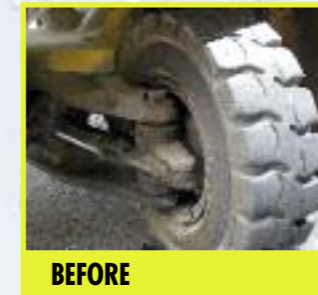
The cleaning result is intensified through the application of compressed air. Simply, you need electrical connection, little amount of heating oil and 0,6 – 0,8 l water/min.

**Field of applications:**

The cleaning of industrial- respectively production machines like punching-, milling-, CNC-, foundries- or plastic machines as well as robots demonstrate a wide application spectrum. Mechanical and electrical installations as well as pneumatic and hydraulic components are clean in short time. Oil, grease, graphite or other tough dirt become clean by a system temperature of 185°C and 16 bar pressure. Desinfection or decontamination of equipment is also possible. It demonstrates in many cases an absolute alternative to the high price and costly dry ice blasting method.

**The machines are available in 230 V, oil fired or 400 V electrical heated. The standard accessories are 10 m special high temperature steam hose with thermo protection cover, control cable 24 V gip/steam lance.**

We are anytime at your disposal and non-binding for further information needed from your side.



**"Dry-steam combined with compressed air"  
environmental friendly, fast and cost saving ...**

**... simply from WEIDNER**

Dry Steam Cleaner Order no.:	bar/PSI	Connected Load	Power	Heating Power	Dry steam	Moist steam	Wet steam	Inlet H <sub>2</sub> O	Compressed air m <sup>3</sup> pro min. / bar	Weight kg	Dimensions LxWxH
DAS300LXTS	16/235	230V/16A/50Hz	2,2 kW / 7,9 Amp.	63 Kw	ca. 0,9 L/min.	ca. 2,0 L/min.	ca. 2,7 L/min.	0,9-2,7 L/min.	min. 0,3 m <sup>3</sup> > /max. 10	145	1080x740x830
DAS300KXTS	16/235	400V/16A/50Hz	3,0 kW /5,7 Amp.	63 Kw	ca. 0,9 L/min.	ca. 2,0 L/min.	ca. 2,7 L/min.	0,9-2,0 L/min.	min. 0,3 m <sup>3</sup> > /max. 10	145	1080x740x830
DAS300ECPs	10/235	400V/32A/50Hz	18 kW /26 Amp.	18 Kw	ca. 0,9 L/min.	ca. 2,0 L/min.	-	0,9-2,7 L/min.	min. 0,3 m <sup>3</sup> > /max. 10	125	1080x740x830

# High Pressure Cleaner unheated



**NEW**

◀ BLUE-JET 95 with hose reel



**The advantages of these appliances are obvious:**

- Hugely time saving
- Easy, effortless work
- Substantially lower costs
- Visibly greater cleanliness
- Universally applicable
- Multifunction nozzle with selectable water jet, flat jet and spot jet

**WEIDNER BLUE-JET** are sturdy, reliable and universal assistants in the house, trade and industry. You will solve your cleaning tasks in the shortest time.

**Special application areas:**

- Removing deposits, moss and algae from terrace slabs, garden furniture and tools, conservatories and green houses
- Cleaning off stubborn dirt from cars, motorbikes, bicycles and boats
- For highest hygiene demands in sauna, bathroom areas and in catering

**Standard equipment of these cleaners are:**

- 8 m quality high pressure hose for BLUE-JET 95
- 15 m quality high pressure hose for BLUE-JET 57, 67, 77, 97
- Professional accessory lance with protection and vario nozzle, at BLUE-JET 95, pressure adjusting nozzle at BLUE-JET 57, 67, 77, 97
- Chemical holding tank
- Motor with thermal protection
- Direct drive without pulley and belts
- Axialpump with 3 ceramic plungers by BLUE-JET 95
- Triplexpump with crank shaft and 3 ceramic plungers at BLUE-JET 57, 67, 77, 97
- Pump head out of brass
- Total stop when pistol is closed



**NEW**

BLUE-JET 57  
BLUE-JET 67  
BLUE-JET 77  
BLUE-JET 97  
▼ with hose reel

**Our special accessories enable more applications, for instance:**

- Pipe and drain cleaning hose
- Rotating brush for large surface objects
- Sandblasting facility for rust and paint removal
- Rotating nozzle (dirt blaster)

Model	Order-no.	Pressure max.		Volume max. l/h	Motor * 230 V / 50 Hz 3~400 V / 50 Hz		Temp max.**	Time delayed stop	Dimensions W x H x D mm	Weight kg	Nozzle size	Users-recommend.
		bar	PSI		230 V	400 V						
BLUE-JET 95	HKYBJ 140 L95	140	2050	600	3,1 kW/10 A	50°C	•	390x390x900	27	040	■ ■	
BLUE-JET 57	HKYBJ 130 L57	130	1900	500	2,2 kW/12 A	60°C	•	390x380x900	34	035	■ ■ ■	
BLUE-JET 67	HKYBJ 130 L67	130	1900	600	2,5 kW/12 A	60°C	•	390x380x900	34	035	■ ■ ■	
BLUE-JET 77	HKYBJ 150 K77	150	2200	720	4,8 kW/12 A	60°C	•	390x380x900	34	035	■ ■ ■	
BLUE-JET 97	HKYBJ 180 K97	180	2600	770	6,6 kW/14 A	60°C	•	390x380x900	47	040	■ ■ ■	



# High Pressure Cleaner unheated



**WEIDNER WASCHBOY Profi Line.**

These mobile and compact sized cleaners are small in dimensions, but strong in cleaning power. The high pressure cleaners are designed for all applications, where a good cleaning impact, excellent machine quality and a long living period are requested. The solid stainless steel cover does not only protect the machine, but can be used as well to build up a high pressure host reel.



◀ WASCHBOY 132 LXTF  
WASCHBOY 162 LXTF

**Special application areas are, for instance:**

Cleaning of agricultural machineries, milking parlors, stables, vehicles and industrial machineries and the building trade. Removal of stubborn dirt on building fronts, monuments, industrial floors, ideal for building renovation and for concrete and professional stone cleaning. The benefit of using this product is clear. Effective short working times, enormous energy saving and long useful life due to the high industrial quality.



WASCHBOY 212 KRK  
WASCHBOY 212 KRKA  
WASCHBOY 213 KWPA



**Standard equipment:**

- Transportation without strain due to the trolley
- 10 m quality high pressure hose
- Pistol with hand protection, lance and pressure adjusting nozzle
- Chemical dosing via injector
- Motor with thermal injector
- Direct drive without pulley and belts
- Slow running triplexpump with 3 ceramic plungers
- Industrial motor with 100% running time
- Infinitely variable volume and pressure
- Holder for pistol and accessories
- Drawing of water is possible
- Use of hot water up to 60° C
- Multi utilisation due to availability of various accessories
- Time delayed pressure free stop

This version is especially designed to be used in craft and construction companies. The reliable pump group is built safely into a robust steel tube frame. With the adaptable chassis (optional accessory), the cleaner can be easily transported to it's working location, even over stairs. There arrived, a good standing is guaranteed on working platforms or similar, by simply taking off the chassis. The tubular frame is protecting the unit, but offers at the same time the possibility for easy carrying by hand or lifting by cranes to the desired areas.

special accessory: trolley ▶



WASCHBOY HKY 132 LXTR  
WASCHBOY HKY 162 LXTR

Model	Order-no.	Pressure max.		Volume max. l/h	Motor * 230 V / 50 Hz 3~400 V / 50 Hz		Temp max.**	Time delayed stop	Dimensions W x H x D mm	Weight kg	Nozzle size	Users-recommend.
		bar	PSI		230 V	400 V						
WASCHBOY-132 R	HKY 132 LXTR	130	2000	660	3,1 kW/15 A	60°C			520x330x330	34	045	■ ■
WASCHBOY-162 R	HKY 162 LXTR	160	2350	540	3,1 kW/15 A	60°C			520x330x330	34	035	■ ■
WASCHBOY-132 F	HKY 132 LXTF	130	2000	660	3,1 kW/15 A	60°C			520x500x850	46	045	■ ■
WASCHBOY-162 F	HKY 162 LXTF	160	2350	540	3,1 kW/15 A	60°C			520x500x850	46	035	■ ■
WASCHBOY-212	HKY 212 KRK	210	3050	1000	6,2 kW/13,5 A	60°C			580x580x910	61	05	■ ■ ○
WASCHBOY-212 A	HKY 212 KRKA	210	3050	1000	6,2 kW/13,5 A	60°C	•		580x580x910	61	05	■ ■ ○
WASCHBOY-213 A	HKY 213 KWPA	210	3050	1000	6,2 kW/13,5 A	60°C	•		580x580x910	61	05	■ ■ ○

\* machines with special voltage on request \*\*with primary pressure only/Time delayed stop — units without time delayed stop with Thermoprotection 55° C ○ with Vario-Press no injector function

# Tank Interior Cleaning Systems stationary



A technique which is top modern, but simple and reliable and approved since 25 years



Tank cleaning station in Thailand/Malaysia.



Washing channel in Malaysia.

Based on your cleaning needs, we plan and tailor the tank cleaning system for you.

- individual built for the volume and products you have to clean
- individual built to fit into your premises and buildings
- with full automatic cleaning cycles, based on our experience or based on your wishes, nobody needs to enter in the tanks, except to inspect for issuing a cleaning certificate
- built with the best components available to ensure maximum reliability and a long operating life consequently warrant a maximum profit.



Close loop cleaning system for latex, dispersion or racine.



The system can be installed into an equipment room as well as into 20' or 40' container boxes.



High pressure cleaning with the hand gun of manhole cover, hoses and valves.



# Tank Interior Cleaning Systems stationary



Cleaning technology built into a 40' container box.



Pump technology of a 4 bay tank cleaning system, being able to wash up to 250 compartments a day.

### Cleaning head:

TIK 2000 tank cleaning head (spinner 360 degree)  
stainless steel lay out, water hydraulic operated, explosion proof.



The tank cleaning head can be operated with 2 or 4 nozzles, the rotation of the stainless steel cleaning head is operated with water backstroke. The rotation of the head can be infinitely adjusted. There is no difference in the rotation between hot and cold water operation. There is no need for any other energy source like compressed air or electricity.

### Technical datas:

Water volume : 40 – 200 l/min  
Pressure : 40 – 200 bar  
Temperature : 90°C



Remote control at the wash bay, fully explosion proof.

# Outdoor Fleet Cleaning



The technique of the self service car washing is here transferred to truck and delivery van fleet cleaning. The hard ware and pump technology is being installed into an equipment room.

The automatic hose reels carrying the high pressure hoses as well as the guns and lances are built into stainless steel cabinets which are located outside at the wash bays.

With this modular system various wash bays can be equipped. The pump modules are operated via remote controls located at the wash bay.



◀ COMBI 250 series (Page 20)



▲ CS 2000 series (Page 20)



▲ CM 3000 series (Page 24 and 25)



▲ CX series (Page 22 and 23)

**These machines can be used for outdoor fleet cleaning.**



# Outdoor Fleet Cleaning



Box with Hose roll up automatic.



Remote control for a cleaning bay. This shows a customer tailored remote control for a slaughter house, cleaning and disinfecting of the trucks is here needed.



### The following cleaning procedures are possible:

- High pressure cleaning with and without chemicals
- High pressure cleaning and disinfecting

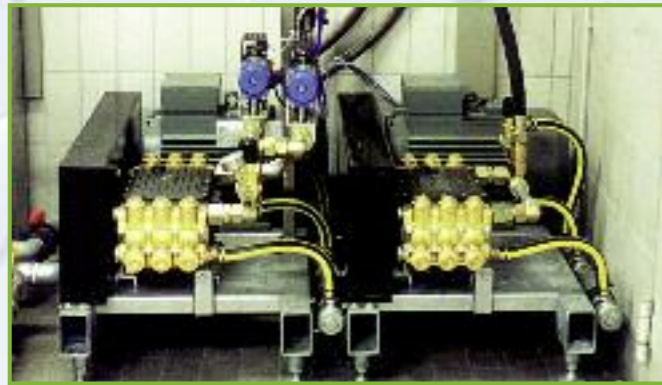
The chemical or disinfectant is brought onto the truck by special dosing pumps with low pressure, this ensures exact dosage and maximum acting of chemical and disinfectant.

The applications are wherever washing is needed in the cold month, as the outdoor cabined is heated and protected against freezing.

### The advantages:

- Permanent ready to wash around the clock
- Several trucks can be cleaned by using multi pump system
- Outdoor cabinet is insulated and heated
- Stainless steel lay out
- Hoses and guns are always arranged nicely

# High Pressure Chassis and Wheel Wash Systems



Pump module for chassis and wheel wash.



Chassis and wheel wash system connected to a truck washing machine.



Chassis and frame washing.



Under chassis cleaning.



Under chassis cleaning module (built into the floor).

# Accessories • Washing places



### ▼ Wall pivoting bracket with c-profile-rail:

180 degrees rotating gantry to be fixed at the wall with special wall mounting support, available in hot dip galvanized steel 3 m, 4 m, 5 m, 6 m, 7 m of length.



◀ **Bend wall bracket:**  
Gantry floor mounted with double rotating gantry.



### ▲ Ceiling spinner:

360 degrees rotating gantry to be fixed to the roof ceiling, ideal for wash bays in car wash systems, stainless steel layout, available length 4,3 m/4,6 m/4,9 m/5,2 m.



### ▲ Double ceiling spinner:

Stainless steel lay out both brooms rotating 360 degrees. To be used one for a brush or chemical foam spray, second one for high pressure cleaning.

Available length: 1) 1,45 m and 1.60 m  
2) 1,60 m and 1.74 m.

Hose trolley system.



◀ Wash bay with hose guiding system, available length 12/18/24/30 m.



### Advantage:

- The washing site is always tidy
- Increase the operation safety
- Less wear out due to non contacting the floor
- The hose cannot be ride over or gets bending





Description	Order-No.	Description
 25°	HDD 15 60 00	2503 R 1/4 AG
	HDD 15 61 00	25035 R 1/4 AG
	HDD 15 62 00	2504 R 1/4 AG
	HDD 15 63 00	25045 R 1/4 AG
	HDD 15 64 00	2505 1/4 AG
	HDD 15 65 00	25055 1/4 AG
	HDD 15 66 00	2506 R 1/4 AG
	HDD 15 68 00	2507 R 1/4 AG
	HDD 15 69 00	2508 R 1/4 AG
	HDD 15 72 00	2509 R 1/4 AG
HDD 15 73 00	2512 1/4 AG	
 0°	HDD 15 88 00	0004 1/4 AG
	HDD 15 89 00	00045 1/4 AG
	HDD 15 90 00	0005 1/4 USS
	HDD 15 91 00	00055 1/4 AG
	HDD 15 92 00	0006 1/4 USS
	HDD 15 95 00	0009 1/4 AG
	HDD 15 96 00	0010 R 1/4 AG
	HDD 15 98 00	00065 1/4 AG
Hp-nozzle	HDL 16 40 50	400 mm, 03 white
	HDL 16 40 00	400 mm, 035 brown
	HDL 16 41 00	400 mm, 04 yellow
	HDL 16 42 00	400 mm, 045 blue
	HDL 16 44 00	400 mm, 055 red
Swing over nozzle	HDL 16 15 00	600 mm (without nozzle)
Dirt blaster	HDL 16 27 35	600 mm, 200 bar, 035 cold water
	HDL 16 20 00	600 mm, 200 bar, 035 hot water
	HDL 16 25 00	600 mm, 170 bar, 05 hot water
	HDL 16 26 00	600 mm, 200 bar, 055 hot water
	HDL 16 27 00	600 mm, 200 bar, 045 hot water
Pressure adjusting nozzle	HDL 16 31 00	600 mm (without nozzle)
Foam injector with container	HDL 15 56 00	1 l
	HDL 15 55 00	
Lance holder	SOZ410000	
Hose holder	SOZ410100	

Description	Order-No.	Description
Bended WC-lance	HDL 17 60 00	400 mm, bended
Lance for chassis cleaning	HDL 17 70 00	900 mm
Brush 350 mm	HDE 16 53 00	yellow without lance
Rotating brush	HDE 16 66 00	rotating by water jet max. 140 bar, max. 40°C
Telescopic brush	HDL 16 50 00	telescopic
Rotating brush industry	HDL 16 60 00	rotating by water jet
Sandblast attachment industry	HDL 14 30 00	
Lance/stainless steel	3727800330	330 mm
	3727800430	430 mm
	3727800500	500 mm
	3727800600	600 mm
	3727800800	800 mm
	37278001000	1000 mm
	37278001200	1200 mm
	37278001500	1500 mm
	37278002000	2000 mm
Lance with hand protection/stainless steel	3727800333	330 mm
	3727800433	430 mm
	3727800533	500 mm
	3727800633	600 mm
	3727800833	800 mm
	37278001033	1000 mm
	37278001233	1200 mm
	37278001533	1500 mm
	37278002033	2000 mm
Hose roll up automatic stainless steel for 20 m hp – hose	SOZ 131110	
Hose roll up automatic stainless steel	SOZ 131500	for 40 m hp – hose



Description	Order-No.	Description
Floor cleaner/stainless steel	HDL 16 71 50	∅ 300 mm
Floor cleaner/PVC	HDL 03 91 14	∅ 300 mm
Extension pipe	HDL 17 56 00	800 mm
Pipe cleaning hose	HDK 19 00 00	10 m
	HDK 19 01 00	15 m
	HDK 19 02 00	20 m
	HDK 19 03 00	25 m
	HDK 19 04 00	30 m
	HDK 19 06 00	40 m
	HDK 19 08 00	50 m
Pipe cleaning nozzle	HDK 19 12 00	rotating
Trigger gun 1100	HDP 17 03 00	3/8" AG long
	HDP 17 04 00	1/4" AG long
Trigger gun 3000	HDP 17 07 00	short
Trigger gun 3000	HDP 17 08 00	long
Trigger gun 3000	HDP 17 09 00	short variopress
Trigger gun 3000	HDP 17 10 00	long variopress
Trigger gun also in stainless steel, power support available		

Description	Order-No.	Description
H-P hose	HDS 18 05 00	8 m, NW 6
H-P hose	HDS 18 06 00	10 m NW 6, 3/8"
	HDS 18 32 00	10 m NW 8, 2 ST, 400 bar
	HDS 18 42 00	15 m NW 8, 2 ST, 400 bar
	HDS 18 52 00	20 m NW 8, 2 ST, 400 bar
	HDS 18 61 00	25 m NW 8, 2 ST, 400 bar
	HDS 18 62 00	30 m NW 8
	HDS 18 62 50	40 m NW 8, 2 ST, 400 bar
H-P hose abrasive resistant	HDS 18 85 00	10 m NW 10
	HDS 18 86 00	15 m NW 10
	HDS 18 87 00	20 m NW 10
	HDS 18 88 00	25 m NW 10
	HDS 18 89 00	30 m NW 10
	HDS 18 91 00	40 m NW 10
Up-hose coupling	HDS 18 90 00	2 x M 22
Water drawing hose	HDA 20 20 00	3 m complete incl. filter
Stabilisator S	WAS 15 00 10	1 kg
Hose reel	HDA 13 20 00	stainless for 20 m up-hose (without hp-hose)
	HDA 13 25 00	stainless for 40 m up-hose (without hp-hose)
Hose reel PVC	HDA 03 91 14	complete with connection hose reel only for the series BLUE JET 57/67/77/97 for max. 10 m hp-hose
Connection hose reel	HDA 13 66 00	W'Bär S 2000
	HDA 13 68 00	for HKY 242 BXRA
	HDA 13 69 00	W'Boy, W'Bär S 500



HDR-09/10

